



FRIDAY 3 DECEMBER 2021

SOMERFORD PRIMARY SCHOOL

This is a BUMPER edition of our newsletter! Please make sure you find some time to have a look. It contains lots of information about our Christmas activities and lots of other events happening in the local community.

Any Christmas event at school is sadly subject to a cancellation due to ever changing COVID rules, guidance and cases in school. We will try to communicate as quickly as possible. Please take a LFT at home before attending any event.

Mrs Frampton

Attendance

We are so pleased with everyone who is trying so hard to be in school every day. We know this is challenging with the winter bugs hitting too. Mr Walsh and I have carried out our November attendance review and we will be inviting some parents in to see what we can do to help improve their child's attendance.

This is a partnership approach.

Lateral Flow Testing

It has been suggested by Public Health and the Local Authority that you test your child with a Lateral Flow Device before they attend school on a Monday morning. Whilst we encourage this as an additional protective measure, it is your choice and we will not be asking for or collecting results.

You still MUST seek a PCR test if your child has symptoms, an LFD test is not correct in this situation.

PE Kit

Our Uniform Policy states that PE kit is a **pair of black shorts or dark coloured jogging bottoms, a plain white t-shirt and a pair of plimsolls or trainers.**

Thank you to those children and parents who have ensured this is worn now.

This uniform has been chosen as it is easily and cheaply available.

We have some second hand kit we can arrange if you are struggling.

Children will be challenged and you will be contacted if they do not have the correct uniform.

Christmas

We are looking forward to our Christmas activities in school and we were all especially excited when our class elves arrived in classrooms on Wednesday!

We are still planning at this time to perform our infant nativities to a live audience of parents but we will let you know if this needs to change.

We are really keen to welcome you all to our outside carol concert on **Monday at 5.00pm.** Wrap up warm!

Address:

Draper Road, Christchurch, Dorset BH23 3AS

Tel: (01202) 485436

Fax: 01202 482359

Email: office@somerford.dorset.sch.uk

Website: www.somerford.dorset.sch.uk

Headteacher : Helen Frampton



FRIDAY 3 DECEMBER 2021

SOMERFORD PRIMARY SCHOOL

Tree Planting

Our 342 trees have arrived! Over the next few weeks we will need all hands on deck to plant them. If you can help, please contact us via the office. If you are a member of a club or organisation who may help us too please let us know!

Thank you to those who have already volunteered.

Trips!

Year 4 finally went on their trip to Stanpit Marsh and had a fantastic time. They all represented the school brilliantly. You can see some photos of their trip on Twitter.

Calling all Gardeners!

We have fantastic grounds at our school and lots of raised beds, borders and pots. These all take looking after and we are really keen to grow a team of volunteers who can help us to look after our gardens. There would be no set hours and you could come and help when you are free. You may also know a grandparent or other relative who would like to come and help us. We can provide the tools you need and the gardens– we just need you!

Please speak to the main office or email office@somerford.dorset.sch.uk if you can spare us some time.

School Closed

On Friday 17th December we have a staff training day and school is closed to pupils.

Non uniform day

On Thursday 16th December we will have a non uniform day in aid of Christchurch Foodbank. Please bring a tin or packet as a donation.

An update from HC3S, our catering provider

On 15 (YR-3) and 16 (Y4-6) December, our catering team will be serving a Christmas menu for your child's school lunch. We hope your child is joining us for what promises to be a fun-filled festive event with traditional dishes and desserts on the menu.

Christmas Jumper Day

On Friday 10th December we are holding our Christmas Jumper Day in aid of Save the Children. Children can wear a festive jumper for a £1 suggested donation. You do not need to buy a jumper —get creative and decorate one you already have.

Please remember it is only the jumper which is different. All other school uniform must be worn.

Address:

Draper Road, Christchurch, Dorset BH23 3AS

Tel: (01202) 485436

Fax: 01202 482359

Email: office@somerford.dorset.sch.uk

Website: www.somerford.dorset.sch.uk

Headteacher : Helen Frampton

FRIDAY 3 DECEMBER 2021

SOMERFORD PRIMARY SCHOOL



Address:

Draper Road, Christchurch, Dorset BH23 3AS

Tel: (01202) 485436

Fax: 01202 482359

Email: office@somerford.dorset.sch.uk

Website: www.somerford.dorset.sch.uk

Headteacher : Helen Frampton



FRIDAY 3 DECEMBER 2021

SOMERFORD PRIMARY SCHOOL

Jubilee Wood

We have a very new and exciting project planned – we're going to plant a wood!
Yes a whole new wood and we hope you will help us to achieve our aim!
With your help, we are aiming to plant over four hundred trees to create The Jubilee Wood.

The wood is being planted to celebrate The Queen's Platinum Jubilee and to do our bit to fight climate change. By planting a variety of native trees we will be creating a wild wood and wildlife haven for generations to come. This means that with your support, we will be planting and creating the largest area of new woodland in Christchurch.

We have the land, we have the trees, we have the volunteer tree planters – but now we need sponsors.

With Christmas just round the corner. You can offset your carbon footprint by gifting family and friends a tree or trees to be planted on their behalf. You can also sponsor a tree to celebrate the Queen's Jubilee, a birthday, anniversary or in memory of a loved one? Whatever the occasion, when you sponsor a tree, you can be confident that you are investing in the future well being of our children, our community and the local environment.

Our wildlife tree plantings will be; hawthorn, rowan, blackthorn, silver birch, hazel, common oak

Our wildwood tree plantings will be; hazel, crab apple, downy birch, hawthorn, goat willow

Please help us by sponsoring a tree today

<https://donatemyschool.com/somerford-primary-school-2785>

Bling your bike day

We had such a collection of amazing looking bikes and scooters last Friday! Thank you for taking part. You can see some photos of the event on Twitter.

Handball

Thank you to the Year 3 and 4 children who represented our school so well at a handball festival at the Grange this week. They were awesome!

Goodbye

We are sadly saying goodbye to Mr Cooper next week as he moves on to new adventures. He will be greatly missed by children and staff. We would like to thank him for his years of service to our school and wish him lots of luck for the future.

Address:

Draper Road, Christchurch, Dorset BH23 3AS

Tel: (01202) 485436

Fax: 01202 482359

Email: office@somerford.dorset.sch.uk

Website: www.somerford.dorset.sch.uk

Headteacher : Helen Frampton



FRIDAY 3 DECEMBER 2021

Car seats and the law

Children must normally use a child car seat until they're 12 years old or 135 centimetres tall, whichever comes first.

Children over 12 or more than 135cm tall must wear a seat belt.

You can choose a child car seat based on your child's height or weight.

Please ensure children are safe when travelling in cars—don't break the law!

Christmas Events

26th November was our Bling Your Bike Day

29th November was our Decorate the School Afternoon

1st December our classroom elves arrived and we started our school Advent Calendar

6th December is our outside carol concert 5pm-6pm on Junior playground

7th December Year R Nativity 9.30am

8th December Year 1 Nativity 9.30am

8th December Year R Nativity 2.30pm

9th December Year 2 Nativity 9.30am

9th December Year 1 Nativity 2.30pm

10th December Year 2 Nativity 2.30pm

10th December Christmas Jumper Day £1 donation

14th December High Cross Church Christmas services am

14th December Christmas parties (all classes) pm

15th December Years R-3 Christmas Lunch

16th December Years 4-6 Christmas Lunch

16th December Non uniform day for Christchurch Foodbank

16th December Last Day of Term

Merry Christmas!!

Carol Service

We are really looking forward to welcoming you to our first parent event for a long time!

To keep everyone safe.....

- ⇒ Please take an LFD test before attending
- ⇒ Please do not attend if anyone in your group has symptoms of COVID
- ⇒ Please use the hand sanitizer when asked
- ⇒ There will be no entry to school and no toilets available
- ⇒ Please stand where asked to by staff

There will be a refreshment stand—donations welcome.

Address:

Draper Road, Christchurch, Dorset BH23 3AS

Tel: (01202) 485436

Fax: 01202 482359

Email: office@somerford.dorset.sch.uk

Website: www.somerford.dorset.sch.uk

Headteacher : Helen Frampton



FRIDAY 3 DECEMBER 2021

Christmas parties

This year we will be holding these all on the same afternoon in classrooms. Children come to school in uniform but can bring party clothes to change in to if they would like. Please send your child in to school with a named **small** plate of party food. They will have had lunch! No food can be shared.

SOMERFORD PRIMARY SCHOOL

Christmas Holiday Clubs
(finish that Christmas Shopping in peace!)

£24.50 per day

8.45am to 4pm

4 days for £75

Multi Sports
Mon 20/12/21 &
Tues 21/12/21

Bounce, Bend & Boogie!
Weds 22/12/21 &
Thurs 23/12/21

2 RIVERSMEET LEISURE COMPLEX

Book online today - limited spaces!

Watermans Park December Programme



Park Life

Saturday 18th, 10am - 12pm
Nature based activities for the whole family.

At this month's Park Life session we will be making our own bird feeders. During the winter months food can become scarce for our birds, so it's a great time to put some food out in our gardens and parks. We will be learning what to feed them and all the different ways we can create feeding stations, so you can enjoy watching the birds all winter.

Free event - Book at parksfoundation.org.uk/events

Nature Tots

Tuesday 7th, 16th, 10am - 11am
If you and your little ones enjoy spending time outdoors and learning about nature, then NatureTots is the place to be.

A fun, nature based playgroup for under 5's and their carer's, where child-led play and free exploration, is mixed with hands-on learning experiences that are themed around nature and the changing seasons.

Free event - Book at parksfoundation.org.uk/events

Coming soon...

Keep your eyes peeled for exciting volunteering opportunities coming up at Waterman's Park. Over the next few months we will continue to improve the park for you, plus improve habitat opportunities for nature, including adding more native trees and plants - and we need your help to do that.

If your keen to learn how we can help restore nature then please get in contact with:
josh@parksfoundation.org.uk

Book via Eventbrite: bit.ly/Eventbrite-ParksFoundation
parksfoundation.org.uk/events
Facebook.com/The Parks Foundation E: melinda@parksfoundation.org.uk

BCP

WILD WORLD Heroes

WINTER MINI CHALLENGE

Be a Wild World Hero this winter!

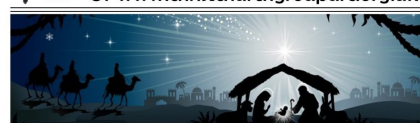
Get rewards for your reading!

Sign up at wintermini.org.uk

Runs 1st December 2021 to 16th January 2022

[@bcplibraries](https://bcplibraries.org.uk)
bcplibraries@poole.gov.uk
libraries

Find us on Facebook @urcchristchurch
Or www.christchurchgroupurc.org.uk



Christmas Services & Events at High Cross Church, Somerford

Christmas Coffee Morning & Fayre

Saturday 4th December 10:00am
All welcome for festive refreshments and plenty of Christmas cheer

Carols by Candlelight

Sunday 19th December, 4:00pm
Join us for carol singing, a short reflection and mince pies!

Crib Service by Candlelight

Friday 24th December, 3:30pm

A children's service thinking about the Christmas story...

Midnight Mass

Friday 24th December, 11:30pm

A traditional communion service, all are welcome!

Christmas Day Family Worship

Saturday 25th December, 10:00am

A celebratory family service led by Rev Paul. Everyone welcome, don't forget to bring a small present to show!

Address:

Draper Road, Christchurch, Dorset BH23 3AS

Tel: (01202) 485436

Fax: 01202 482359

Email: office@somerford.dorset.sch.uk

Website: www.somerford.dorset.sch.uk

Headteacher : Helen Frampton