

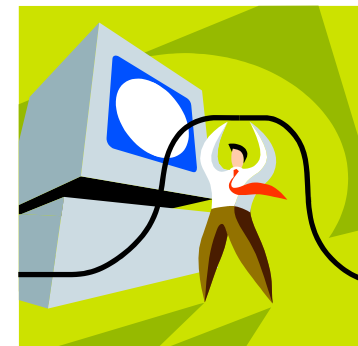
Not all public wifi (eg in cafes) has web filters so you will have to make sure you protect your child's mobile devices when they leave the house. However you can be sure that access is safe in locations that display the Friendly Wifi symbol.



Somerford Primary School
Draper Road
Christchurch BH23 3AS
Tel : 01202 485436
Headteacher : Mrs H Frampton



Somerford Primary School



Keeping Safe Online

**Parental controls
on
your child's devices**

On a smartphone, tablet or games console you can use parental controls to manage a range of functions, including access to websites, app stores and apps, as well as location services and in-app purchases.

SMARTPHONES & TABLETS

Android

1. To set up a restricted account on an Android smartphone or tablet, go to 'Settings' and select 'Users' in the Device section.
2. Tap 'Add User' or 'Profile', then select 'Restricted
3. Profile' and enter the passcode.
4. Tap the round icon next to 'New Profile' to change the name of the profile, then tap 'OK'.
5. Go through the list of features your child can access and, using the toggle buttons, choose whether you'd like them on or off.



iOS

1. To enable restrictions on your child's iPhone or iPad, tap 'Settings, General, Enable Restrictions' and enter a passcode.
2. Decide which features you're happy for your child to access and, using the toggle buttons, turn the rest off.

Windows Phone

1. Go to the Windows Phone website and select 'My Family'.
2. Sign in using your own Microsoft account (if you don't have an account you can create one).
3. Click 'Get Started' on the 'My family' set-up page and then click 'Go' to add your child's name.
4. Enter the Microsoft account your child uses to sign in on their phone.
5. To change the app download settings, click your child's name on the 'My Family' homepage, click 'Change Settings' and choose from the options provided.

You can set up parental controls for app stores on your child's device to prevent them from purchasing or downloading apps inappropriate for their age.

[How to set up controls on Google Play](#)



VODAFONE GUARDIAN

Vodafone Guardian helps to protect your child from inappropriate calls, messages and online content. Simply download the free app from Google Play and customise the various settings. You'll be asked to enter a parent contact number so that you receive a text if Vodafone Guardian is deactivated and when an emergency call is made.

Vodafone Content Control helps to prevent young people from accessing inappropriate content and services, such as violent games, adult content and gambling websites.

Go to the Vodafone website to log in to or register your online account and turn on Content Control. Please note, this works only on the Vodafone network and **NOT** on wifi.

<https://www.vodafone.co.uk/contentcontrolpage/vfb-force-choice-page.html>



GAMES CONSOLES

Many children and teenagers enjoy playing on games consoles. As well as being fun, many experts say that gaming helps to improve their reflexes and keep their brains active, however it also has its risks.

Young people often spend too long in front of the screen or access inappropriate content. If they take part in multiplayer gaming online, they may be contacted by strangers.

The main games consoles include parental controls to help you manage which games your child plays, how long they can play for and whether they can play against other people.

For example, Xbox lets you restrict games, apps and films by age rating. On PlayStation you can also disable video and voice chat.

For more information and step-by-step guides to setting up parental controls for gaming, go to your search engine and type in the name of your child's games console + 'parental controls UK'.

