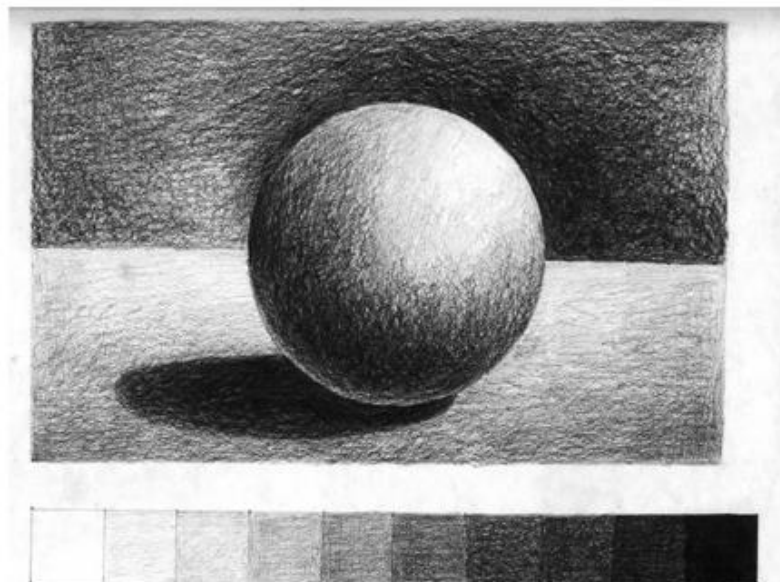


Drawing

Drawing is the art of creating a picture, plan, or sketch by making lines and marks on a surface.

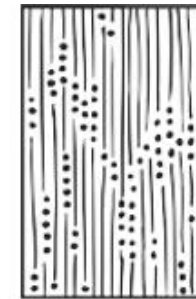
Shading is used to make a drawing appear 3D.



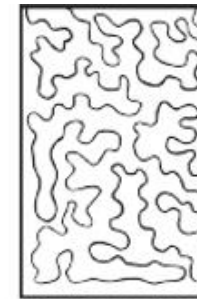
Contour Line



Broken Line



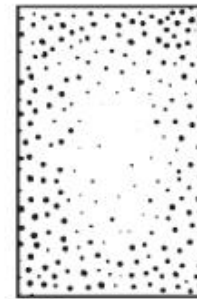
Dots and Lines



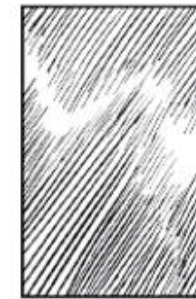
Continuous Line



Curves



Dots



Diagonal Line



Directional Line



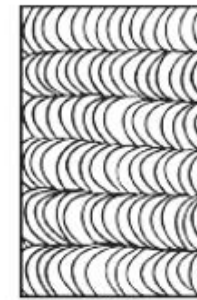
Cross Hatching



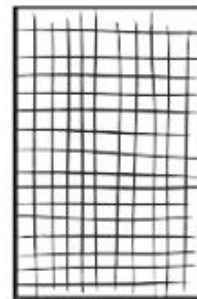
Scribble



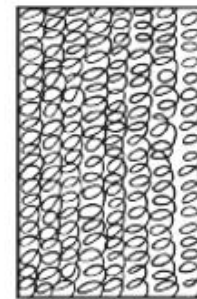
Waves



Curved Line



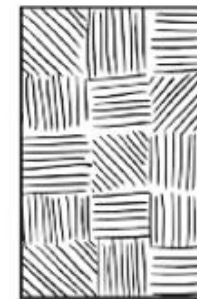
Horizontal/
Vertical



Looped Line



Thick Line



Dashes